



THE ANNIVERSARY 16



THE ANNIVERSARY 16

Model number: 35ANN16763AH19

3 beds • 2 baths • 1216 sq.ft. • 16' width • 76' depth

Our home building facilities invest in continuous product and process improvements. Plans, dimensions, features, materials, specifications and availability are subject to change without notice or obligation. Renderings and floor plans are representative likenesses of our homes and may differ from the actual homes. We invite you to tour a Home Center near you and inspect the highest value in quality housing available or call (918) 686-0584 to speak with a Home Consultant. Copyright 2017, CMH. All rights reserved.

<https://www.claytonmuskogee.com>

CLAYTON HOMES- MUSKOGEE

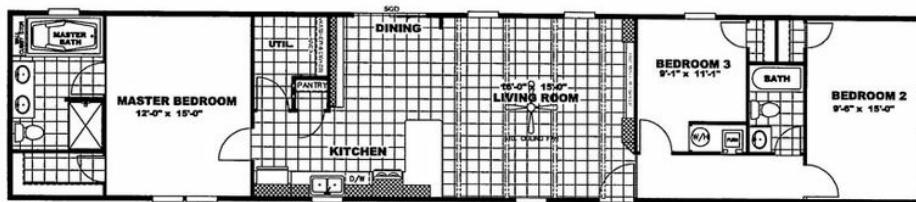
2235 NORTH 32ND STREET
MUSKOGEE, OK 74401

Monday - Thursday: 9am to 6pm
Friday: 9am to 6pm
Saturday: 9am to 5pm
Sunday: Closed

(918) 686-0584



THE ANNIVERSARY 16



THE ANNIVERSARY 16 Model number: 35ANN16763AH19

3 beds • 2 baths • 1216 sq.ft. • 16' width • 76' depth

Our home building facilities invest in continuous product and process improvements. Plans, dimensions, features, materials, specifications and availability are subject to change without notice or obligation. Renderings and floor plans are representative likenesses of our homes and may differ from the actual homes. We invite you to tour a Home Center near you and inspect the highest value in quality housing available or call (918) 686-0584 to speak with a Home Consultant. Copyright 2017, CMH. All rights reserved.

<https://www.claytonmuskogee.com>

CLAYTON HOMES- MUSKOGEE

2235 NORTH 32ND STREET
MUSKOGEE, OK 74401

Monday - Thursday: 9am to 6pm
Friday: 9am to 6pm
Saturday: 9am to 5pm
Sunday: Closed

(918) 686-0584